


# City of Chowchilla

Citizen's Oversight Committee, September 8, 2021

1

## Chowchilla Streets Overview

- 62.9 miles
- Current PCI – 65, unchanged from 2020

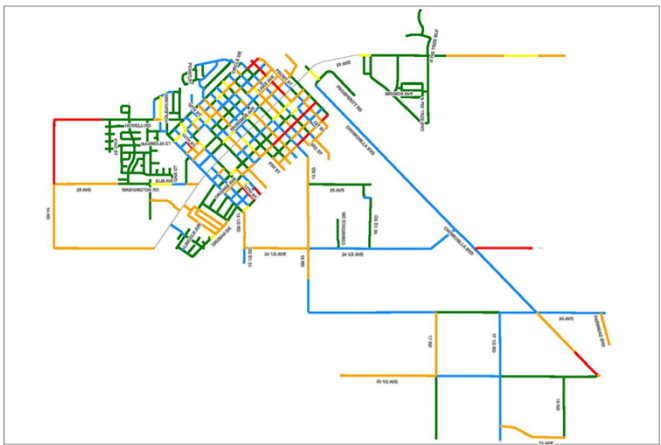


**CITY OF CHOWCHILLA**  
130 S. SECOND STREET  
CHOWCHILLA, CA 93610

**Feature Legend**

- Category I - Very Good
- Category II - Good (Blue Lead)
- Category III - Good (Lead)
- Category IV - Poor
- Category V - Very Poor

### Current PCI Condition



2

## Chowchilla Measure T 2021-22 Allocations

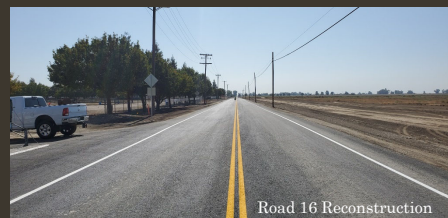
MEASURE T CATEGORY	AMOUNT
Commute Corridors/Farm to Market (Regional)	
Rehab, Reconstruct, Maintenance Program	\$226,867
Safe Routes to School & Jobs (Local)	
Street Maintenance Program	\$117,971
Supplemental Street Maintenance Program	\$ 79,403
Flexible Program (Impounded by MCTC)	\$184,368
ADA Compliance	\$ 4,537
Transit Enhancement Program (Public)	\$ 16,610
ADA / Seniors / Paratransit	\$ 1,543
Environmental Enhancement Program	\$ 18,149
<b>Total</b>	<b>\$465,080</b>

Flexible Program Funds not included in total

3

## Projects Completed in 2020-21

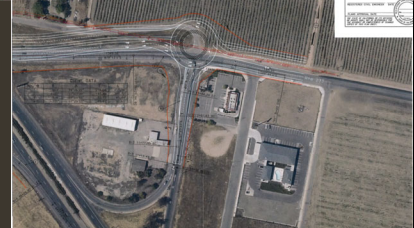
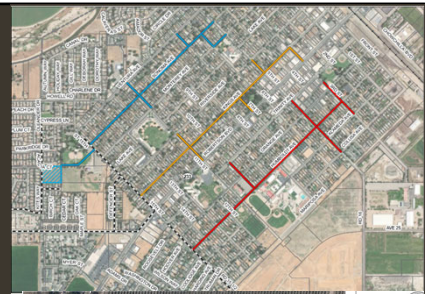
- Road 16 Reconstruction Project Completed to State Route 152 with Madera County
- Total project costs of approx. \$532,105
- Total Measure T used on this projects was \$232,105.
- Various Pothole repairs/patching



4

## Upcoming Projects 2021-22

- Humboldt Storm Drainage and Road Rehabilitation Design – Est. \$79,000 of Measure T allocated for total project. Design and environmental completed. Construction estimated for 2022.
- Design and Environmental reconstruction of Chowchilla Blvd. from Ave 24 to Ave 24 1/2 Construction estimated in Summer 2023.
- SR 99/233 Interchange Project (Roundabouts) - \$600,000 currently being used for completion of Environmental. Unknown construction date.
- Additionally, Measure T will continue to be used for general street maintenance and repair.



5

## Conclusion

- The City of Chowchilla will continue to use various fund combinations, Measure T, Gas Tax, CMAQ, LTF, etc. in order to address the City's transportation needs.
- Questions?



6